

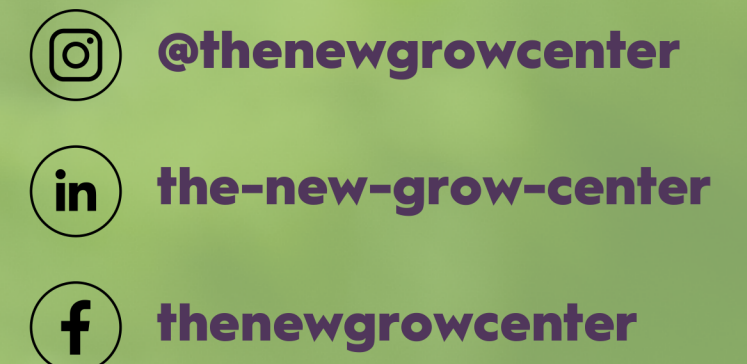


NEW YORK STATE CANNABIS DEREGULATION AND LICENSE TYPES

WWW.THENEWgrowcenter.COM



email: info@thenewgrowcenter.com



@thenewgrowcenter

the-new-grow-center

thenewgrowcenter



AGENDA



ABOUT US & MEET THE TEAM

WHY THIS TRAINING & WEBINAR OBJECTIVES

CANNABIS CRIMINALIZATION

ROAD TO NYS CANNABIS LEGALIZATION

OFFICE OF CANNABIS MANAGEMENT

MEDICAL-USE CANNABIS

CANNABINOID HEMP PROGRAM

NYS CANNABIS LICENSING TYPES



WHO WE ARE

The New Grow Center brings together core principles guided by their team of subject matter experts with diverse skill sets and an array of experience. Our team is committed to building an inclusive and diverse cannabis market by providing access to education, materials, supplies and resources to the local communities. We help empower local leaders and business owners by giving them the necessary support to thrive and succeed in the complex cannabis industry. By putting people first, we've managed to create a thriving ecosystem where everyone can access, share, learn and influence the future of cannabis.

S.O.S

SAFE. ORGANIC. SUSTAINABLE.



MEET THE TEAM

SPEAKERS



ALEJANDRO ALVAREZ

Alejandro has traveled across the country to learn cannabis cultivation best-practices and built his experience on organic and sustainable cannabis cultivation. His experience led to his nomination to the **NYS Cannabis Advisory Board**. Alex is also the CEO and Co-Founder of **Soulful Synergy**. He designs training programs and curricula for an evolving marketplace in order to meet employers' demands.



DEIVID ELLIOT

Deivid has decades of experience setting up and operating cultivation and extraction facilities in Oregon and in South America. He's built multiple companies in the cannabis industry - **Matter CBD** a CBD retailer and international wholesaler, and **Uruguay Hemp Exchange** an international cultivation and processing operation. He's built a huge network in the cannabis world with his knowledge and consultation.

REST OF OUR TEAM



DWAYNE R. NORRIS

SUSTAINABILITY &
SOCIAL EQUITY



DANIEL CARVALHO

MARKETING &
COMPLIANCE



FABIAN OCHOA

FINANCE & BUSINESS
DEVELOPMENT



JOSE ARREDONDO

REAL ESTATE &
INVESTMENTS

WHY THIS TRAINING?

- MRTA passed, so now adult-use (recreational) licenses will be rolling out.
- The New Grow Center wants to educate the community to ensure everyone has up-to-date information and access to this emerging industry.
- Our team wants to make this information easy to access and digest in order to help more people get involved in the cannabis industry. We are always pushing for diversity and inclusion.
- Other States have rolled out licenses, but missed the mark on social equity - we want NYS to succeed in its social equity goals!

WEBINAR OBJECTIVES

- Learn the history of Cannabis criminalization and its road to legalization in NYS.
- Learn about the OCM.
- Understand what Adult-Use Cannabis Licensing is.
- Find out which licenses are being made available to the public in NYS.
- Medical-Use vs Adult-Use in NYS.
- Timeline of what we should expect from NYS licensing/regulations.
- How to get involved.



Criminalization

- In the early 1900's, the United States issued the Marihuana Tax Act of 1937, which was meant to impose several stricter taxes regulations on the growing, sale, and consumption of all forms of marijuana. This was followed in 1951 by the Boggs Act, which introduced a minimum sentencing of two to ten years for possession of cannabis. Both of these combined put pressure on medicinal, industrial, and recreational hemp production in the United States.
-

The Controlled Substances Act

The most major blow of all was dealt by the administration of President Richard Nixon, who signed into law the Controlled Substances Act which aimed to categorize substances based on their potential for abuse, which would thus determine whether or not they could be used for medical use.

Despite having the characteristics of a much higher schedule drug, marijuana was determined to be a Schedule 1 drug, labeling it as addictive and harmful as heroin and banned from almost all use.



The War On Drugs

Shortly after the act's passing, Richard Nixon initiated the War on Drugs, which focused on eradicating illegal drug trade in the U.S including sale of the now illegal cannabis and all cannabis based products.

The War on Drugs resulted in mass incarceration and over-policing in minority communities, something still felt today with many of the older policies still remaining.



“You want to know what this [war on drugs] was really all about? The Nixon campaign in 1968, and the Nixon White House after that, had two enemies: the antiwar left and black people. You understand what I’m saying? We knew we couldn’t make it illegal to be either against the war or black, but by getting the public to associate the hippies with marijuana and blacks with heroin, and then criminalizing both heavily, we could disrupt those communities. We could arrest their leaders, raid their homes, break up their meetings, and vilify them night after night on the evening news. Did we know we were lying about the drugs? Of course we did.”

- John Ehrlichman, Assist. to the President for Domestic Affairs under Pres. Richard Nixon





The Road to Legalization

After some time multiple states began to decriminalize cannabis, with New Mexico being the first state to enact legislation recognizing the medical uses for it in 1978.

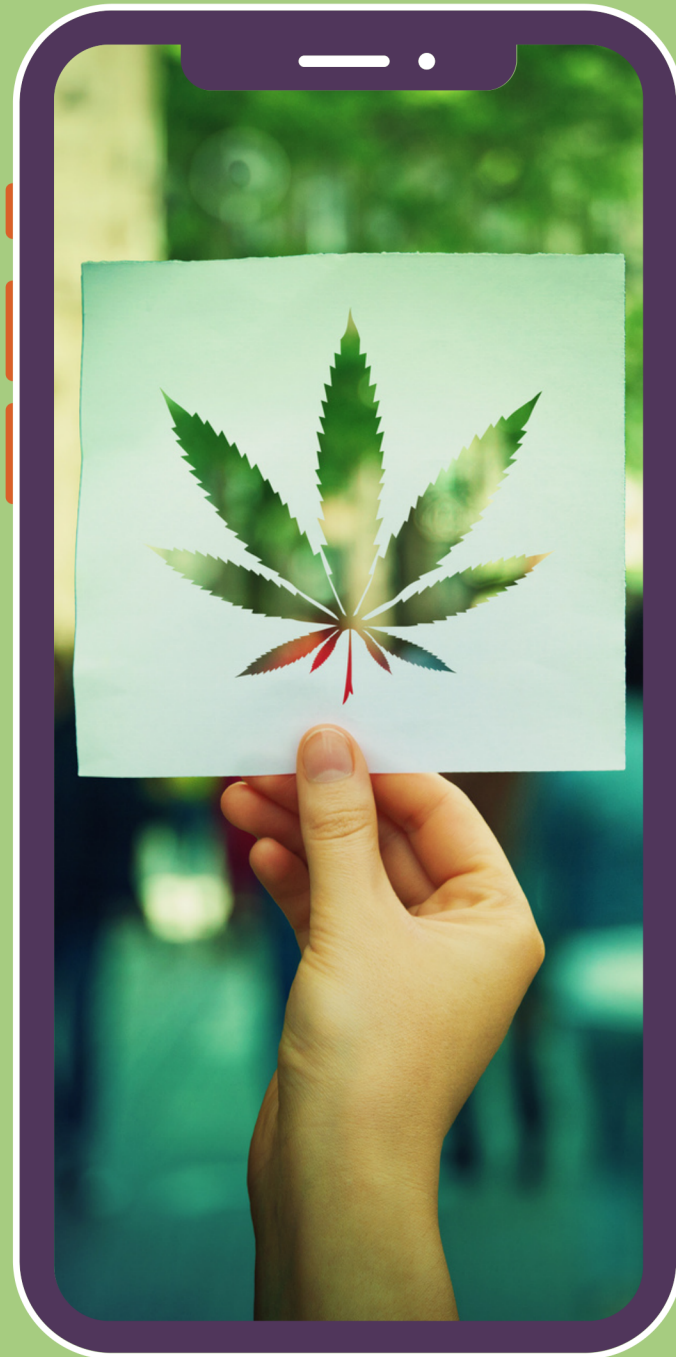
It wouldn't be until 1996, 26 years after the Controlled Substances Act, that California legalized cannabis for medical purposes and started the trend of legalization.

New York State Legalization



Although used frequently in the city, it was only in 2014 that Governor Andrew Cuomo signed legislation that allowed for medical marijuana in New York State.

Heavily delayed due to both internal debate over tax allocation and the COVID-19 pandemic, New York finally legalized marijuana for recreational use in 2021 via the Cannabis Regulation and Taxation act, becoming the 18th state to do so.



The Future of Cannabis in NY

With the Marihuana Regulation and Taxation Act, cannabis has been almost completely legalized, while the legislation for growing it is still being drafted.

To date, 261 production licenses have been approved, with more expected to be approved with the introduction of Adult-Use licenses sometime in the next year.

Despite it being so early, experts already predict NY-grown-and-sold-cannabis to be a multi-billion dollar industry.



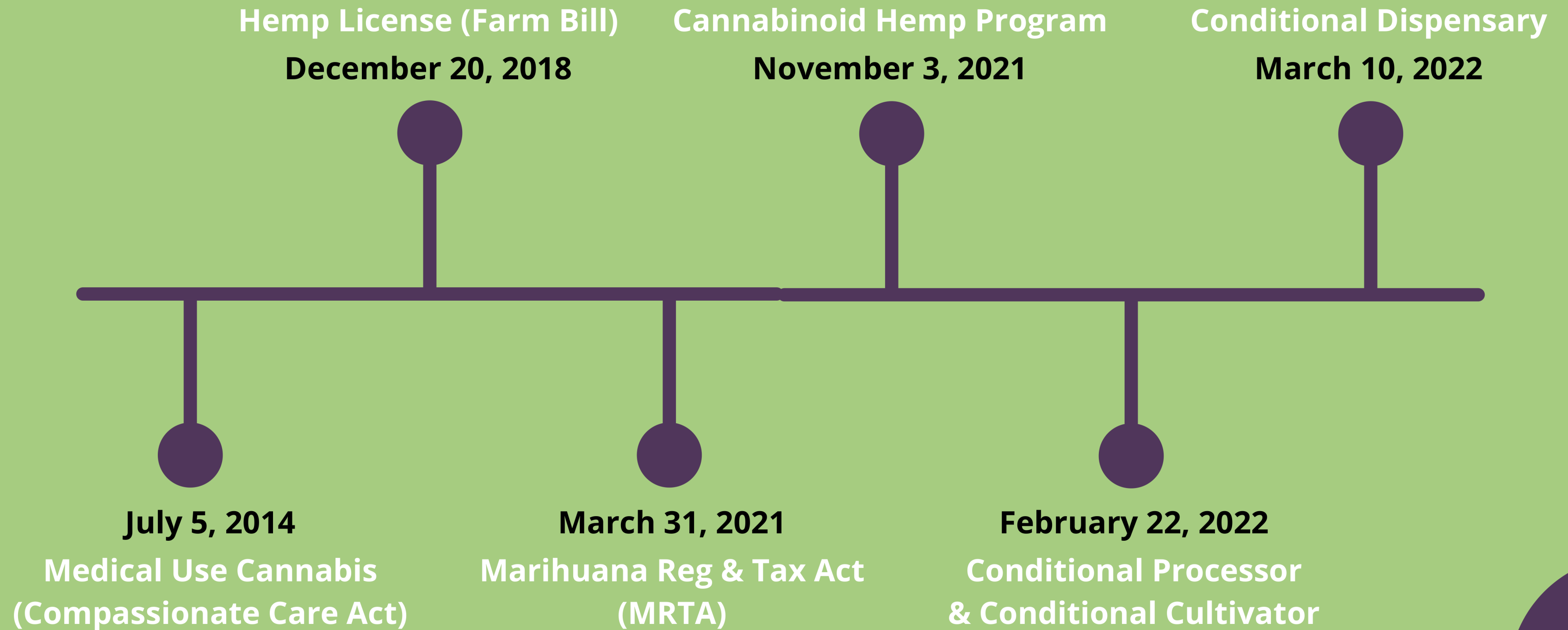
LEGAL CANNABIS IN NEW YORK

And how new laws in cannabis production both protect and provide opportunities to our local communities.

WWW.THENEWGROWCENTER.COM



NYS CANNABIS TIMELINE



MARIHUANA REGULATION AND TAXATION ACT (MRTA)

Link
to full
MRTA



The Marihuana Regulation & Taxation Act (MRTA) was signed into law on March 31, 2021 legalizing adult-use cannabis (also known as marijuana, or recreational marijuana) in New York State.

The legislation created a new Office of Cannabis Management (OCM) governed by a Cannabis Control Board to comprehensively regulate adult-use, medical, and hemp cannabis. The OCM will issue licenses and develop regulations outlining how and when business can participate in the new industry

Office of Cannabis Management



What is the OCM?

The Office of Cannabis Management (OCM) is an independent state office established by the Marijuana Regulation and Taxation Act (MRTA) and housed within the Division of Alcoholic Beverage Control. The OCM provides a unified regulatory structure to comprehensively regulate and control the cultivation, processing, manufacture, distribution, transportation, and sale of cannabis in New York State. This includes medical cannabis, adult-use or “retail” cannabis and cannabinoid hemp.

The goal of the OCM is to ensure social justice, public health and safety, and economic development through a comprehensive regulatory framework that centralizes licensing, enforcement and economic development functions.



“The positive effects of a regulated marijuana market in NYS outweigh the potential negative impacts. Areas that may be a cause for concern can be mitigated with regulation and proper use of public education that is tailored to address key populations. Incorporating proper metrics and indicators will ensure rigorous and ongoing evaluation.”

***Assessment of potential negative impact of regulated marijuana in New York State in a multi-agency study spearheaded by the Department of Health**

Office Of Cannabis Management



Chris Alexander

Executive Director Of The
NYS Office Of Cannabis
Management



Tremaine Wright

Chair of New York's
Cannabis Control Board



Damian Fagon

Chief Equity Officer Of The
NYS Office Of Cannabis
Management

OCM Website

Website Link: www.cannabis.ny.gov

Translate ▼



Services

News

Government

COVID-19

Office of Cannabis Management

About

Adult Use

Medical Cannabis

Cannabinoid Hemp

Licensing

Labs & Sampling Firms

Local Government

Board Meetings

About the Office of Cannabis Management



Why the Comprehensive Regulatory Framework (CRF)?

Social Justice

Establishes a robust social and economic equity program to actively encourage members from communities disproportionately impacted by the policies of prohibition to participate in the new industry.

Public Health & Safety

Administers a sophisticated quality assurance regulatory structure including standards for production and manufacturing, strict product testing, labeling, packaging and advertising to ensure products are safe for consumers and not targeted to youth.

Economic Development

Encourages small businesses and farmers to participate in the cannabis industry with the creation of micro businesses, cooperative and delivery license types.

What is Social and Economic Equity?

The idea of social and economic equity is to incentivize participation in the industry among groups that historically have been disproportionately punished by the War on Drugs, which had attempted previously to criminalize cannabis products.

These incentives also apply to other forms of underrepresented communities that have seen historic disenfranchisement.



Disproportionately Impacted Communities



Minority & Women Owned Businesses

While not always specifically targeted by the War on Drugs, women and minorities within the United States have been subject to both prejudiced laws and lawmakers since its inception, leaving them with many hurdles in attempting to own and operate their own business. This can include things such as obtaining loans, making business connections, or even just not having as much generational wealth.



Distressed Farmers

Many small farms in the US face ever increasing burdens. From the development of suburban sprawl, to pressure from corporations, to increasing operating costs, more small farmers are forced out of the profession every year, with many who stay operating at a loss. The CCB wishes to prioritize these small farmers as a way of giving them an edge over their corporate counterparts and a means of transitioning over to growing cannabis.



Service Disabled Veterans

While some programs exist for military veterans who return home injured from active duty, often times they are neglected by the government and not given the resources that they need to build a career outside of the military. And to help give an opportunity to enter the cannabis industry to these veterans, the CCB is including them in one of the groups they would like to serve.

Licensing The Future



●

The Office of Cannabis Management (OCM) is charged with issuing licenses for businesses to participate in the adult-use, medical and cannabinoid hemp industries.

●

To begin accepting applications for the adult-use program, the OCM needs to issue and implement regulations establishing the application process for different license types.

●

The OCM will actively promote social & economic equity applicants who have been harmed by the prohibition of cannabis for adult-use licenses, establishing a goal of awarding 50% of licenses to social and economic equity applicants

Types Of NYS Cannabis Licenses



Hemp License



Medical License



Adult-Use License

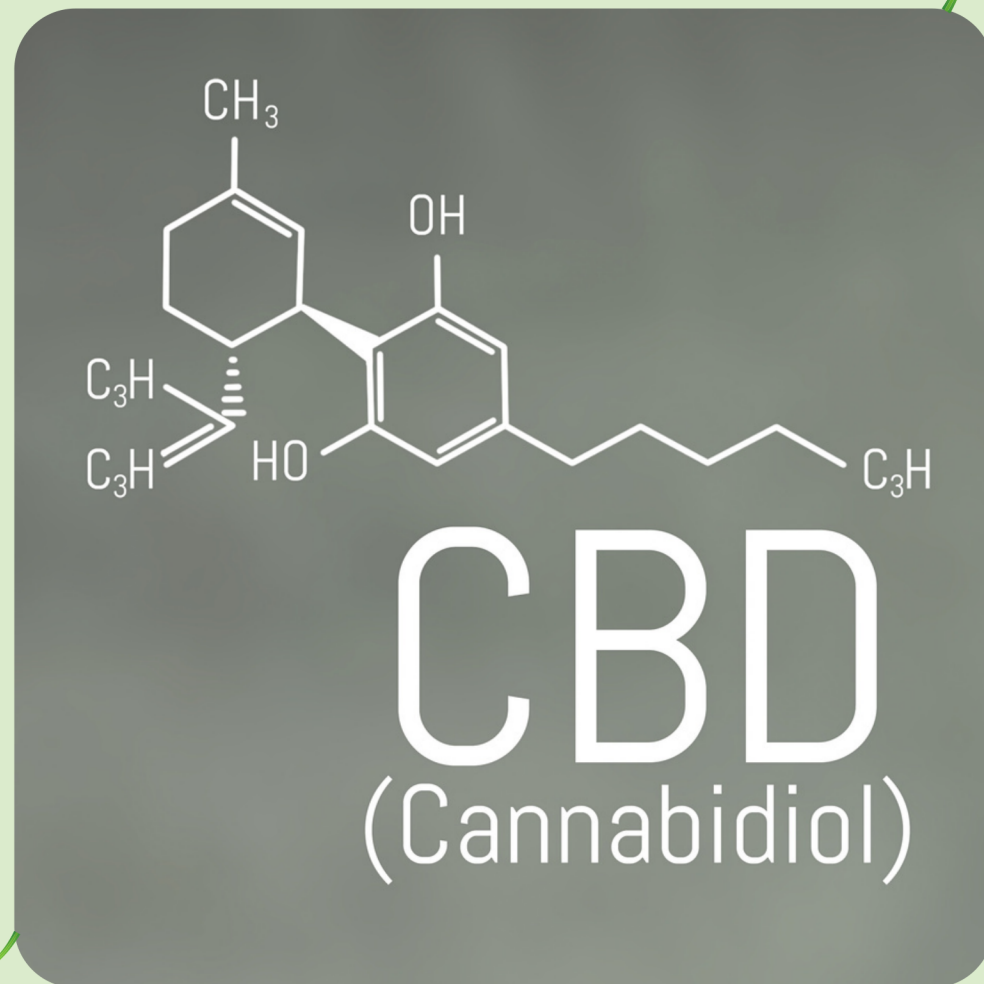
Hemp License (Farm Bill)

The 2018 Federal Farm Bill (Farm Bill) significantly changed federal regulation of the growing of hemp in the United States. In the Farm Bill, hemp was removed from the federal list of controlled substances. The bill defines hemp as “the plant *Cannabis sativa* L. and any part of that plant, including the seeds thereof and all derivatives, extracts, cannabinoids, isomers, acids, salts, and salts of isomers, whether growing or not, with a delta-9 tetrahydrocannabinol concentration of not more than 0.3 percent on a dry weight basis.”

As a result, New York State’s Industrial Hemp Research Pilot Program has been replaced with a new program approved by the United States Department of Agriculture (USDA) as provided for in the Farm Bill and related regulations.

The New York State Department of Agriculture and Markets is administering a USDA approved program to license hemp growers and seed sellers as authorized by New York State law and the Federal Agriculture Improvement Act of 2018 (Federal Farm Bill of 2018). The license allows for the growing of hemp for fiber, grain, CBD, or other purposes.





Cannabinoid Hemp Program Approved

On **November 3rd, 2021**, the New York State Cannabis Control Board approved regulations presented by the Office of Cannabis Management establishing the State's Cannabinoid Hemp Program.

This marks the beginning of a new and exciting industry in New York State for these products.

Medical Cannabis Program

As of 10/01/2022:
Registered Patients = 124,421
Certifying Practitioners = 3,859

PATIENTS

Patients can use medical cannabis if they have been diagnosed with a debilitating or life-threatening condition.

Get Certified, Register Online & Purchase Medical Cannabis.

Oct. 5, 2022 - certified patients and caregivers 21 years of age and older who are registered can now **Cultivate at home**.

PRACTITIONERS

State approved practitioners may certify patients recommending the medical use of cannabis.

Must be **licensed, registered, or certified** by New York State to prescribe controlled substances to humans within the State, such as physicians, nurse practitioners, physicians assistants, dentists, podiatrists, and midwives.

Complete at least a **two-hour course before** they can begin certifying patients for medical cannabis.

DESIGNATED CAREGIVERS

Certified patients may designate up to **TWO** caregivers.

Designated caregivers with a valid registry identification card may assist the patient with the possession, acquisition, delivery, transfer, transportation and/or administration of approved medical cannabis.

Get Designated, Register Online & Purchase medical Cannabis.

An individual may act as a designated caregiver for up to four patients.



We Can Help You Register & Find A Provider!





The Types Of Adult-Use Licenses

As mentioned, the Office of Cannabis Management (OCM) is responsible with issuing the licenses for participation in the cannabis industry after adult-use cannabis was made legal in New York state. However, each license individually covers just one part of the industry, ranging from farming to selling. While the OCM is still too far into its infancy stages to award these licenses, it is important to know which apply for what circumstances and how they can be used.

Adult-Use Licenses Matrix

License Type	Description	Ownership Limits
Adult-Use Cultivator	“Cultivation” means the growing, cloning, harvesting, drying, curing, grading, and trimming of cannabis plants. A cultivator’s license authorizes the acquisition, possession, distribution, cultivation and sale of cannabis from the licensed premises of the adult-use cultivator to a licensed processor.	No person may own more than one cultivator license. A cultivator may own one processor license and one distributor license, solely for the distribution of their own products. Cultivators may not own or have any interest in a licensee in the cannabis retail tier.
Adult-Use Conditional Cultivator	Authorizes cannabis cultivation outdoors or in a greenhouse for two years from the issuance of the license. Adult-Use Conditional Cultivator licensees may minimally process, manufacture, and distribute cannabis flower products without holding an adult-use processor or distributor license, until June 1, 2023.	No person may own more than one Adult-Use Conditional Cultivator license. Adult-Use Conditional Cultivator licensees who comply with applicable laws, guidance, and regulations will be eligible to apply for and receive an adult-use cultivation license. Conditional cultivators may not own or have any interest in a licensee in the cannabis retail tier.

License Type	Description	Ownership Limits
Adult-Use Nursery	“Nursery” means a licensee that produces only clones, immature plants, seeds, and other agricultural products used specifically for the planting, propagation, and cultivation of cannabis by licensed adult use cannabis cultivators, microbusinesses, cooperatives and registered organizations. A nursery license authorizes the production, sale and distribution of clones, immature plants, seeds, and other agricultural products used specifically for the planting, propagation, and cultivation of cannabis by licensed adult-use cultivators, cooperatives, microbusinesses, or registered organizations.	An adult-use cultivator may hold one nursery license.
Adult-Use Processor	“Processor” means a licensee that extracts concentrated cannabis and/or compounds, blends, extracts, infuses, or otherwise manufactures concentrated cannabis or cannabis products. A processor’s license authorizes the acquisition, possession, processing, and sale of cannabis from the licensed premises of adult-use cultivators to licensed distributors.	No person may own more than one processor license. A processor may also obtain a distributor license, solely for the distribution of their own products. Processors may not own or have any interest in a licensee in the cannabis retail tier.
Adult-Use Distributor	“Distributor” means any person who sells at wholesale any cannabis product for which a license is required. A distributor’s license authorizes the acquisition, possession, distribution and sale of cannabis from the licensed premises of a licensed adult-use processor, adult-use cooperative, microbusiness, or registered organization authorized to sell adult-use cannabis, to duly licensed retail dispensaries, on-site consumption sites and adult-use delivery licensees.	No person may own more than one distributor license. Distributors may not own or have any interest in a licensee in the cannabis retail tier.



Adult-Use Licenses Matrix [Cont.]

License Type	Description	Ownership Limits
Adult-Use Cooperative	A cooperative license authorizes the acquisition, possession, cultivation, processing and sale from the licensed premises of the adult-use cooperative by such licensee to duly licensed distributors, on-site consumption sites, registered organization and/or retail dispensaries; but not directly to cannabis consumers. A cooperative license must be organized under cooperative principals, including but not limited to being democratically controlled by the members themselves, on the basis of one vote per member.	No person may own more than one cooperative license. Cooperatives may not own or have any interest in a licensee in the cannabis retail tier.
Adult-Use Microbusiness	"Microbusiness" means a licensee that may act as a cannabis producer for the cultivation of cannabis, a cannabis processor, a cannabis distributor, and a cannabis retailer. A microbusiness license authorizes the limited cultivation, processing, distribution, delivery, and sale of their own adult-use cannabis and cannabis products.	No person may own more than one microbusiness license. No microbusiness can have an interest in or own any other adult-use license type.
Adult-Use Retail Dispensary	"Retailer" means any person who sells at retail any cannabis product, to cannabis consumers. A retail dispensary license authorizes the acquisition, possession, sale and delivery of cannabis from the licensed premises of the retail dispensary by such licensee to cannabis consumers.	No person may own more than three retail dispensary licenses. Retail licensees may not own or have any interest in a licensee in the cultivation, processing or distribution tier.
Adult-Use On-site Consumption	"On-site consumption" means the consumption of cannabis in an area licensed by the Cannabis Control Board. An on-site consumption license authorizes the acquisition, possession, and sale of cannabis from the licensed premises of the on-site consumption licensee to cannabis consumers for use at the on-site consumption location.	No person may own more than three on-site consumption licenses. On-site consumption licensees may not own or have any interest in a licensee in the cultivation, processing or distribution tier.

License Type	Description	Ownership Limits
Adult-Use Delivery	A delivery license authorizes the delivery of cannabis and cannabis products by licensees, independent of another adult-use cannabis license, to cannabis consumers. Delivery licenses may not have a total of more than twenty-five individuals, or the equivalent thereof, providing full-time paid delivery services to cannabis consumers per week under one license.	No person may own more than one delivery license. No delivery licensee can have an interest in or own another adult-use license type.
Registered Organization Adult-Use Cultivator Processor Distributor Retail Dispensary	A registered organization cultivator processor distributor retail dispensary license authorizes a registered organization to have the same privileges and conditions as adult-use cultivator, processor, distributor, and retail dispensary licensees. The location of registered organization adult-use retail dispensaries will be limited to three of the organization's medical dispensaries' and only authorizes the distribution of the registered organization's own products. The timing and manner of a registered organization's participation in the adult-use market will be determined by the Cannabis Control Board.	No registered organization can have an interest in or own any other adult-use license type.
Registered Organization Adult-Use Cultivator Processor Distributor	A registered organization cultivator processor distributor license authorizes a registered organization to have the same privileges of adult-use cultivator, processor, and distributor licensees. The timing and manner of a registered organization's participation in the adult-use market will be determined by the Cannabis Control Board.	No registered organization can have an interest in or own any other adult-use license type.

Adult-Use Cultivator



“Cultivation” means the growing, cloning, harvesting, drying, curing, grading, and trimming of cannabis plants.

A cultivator’s license authorizes the acquisition, possession, distribution, cultivation and sale of cannabis from the licensed premises of the adult-use cultivator to a licensed processor.

****No person may own more than one cultivator license. A cultivator may own one processor license and one distributor license, solely for the distribution of their own products. Cultivators may not own or have any interest in a licensee in the cannabis retail tier.***



Conditional Cultivator

On February 22, 2022, Governor Kathy Hochul signed into law S.8084-A/A.9283-A, creating a new Adult-Use Conditional Cultivator license, authorizing eligible hemp growers to apply for a license to grow cannabis containing over 0.3% THC for the upcoming adult-use market. To be eligible to apply, the hemp grower must have been authorized to grow hemp under the Department of Agriculture and Markets Industrial Hemp Research Pilot Program and meet certain other requirements. The application window for the Adult-Use Conditional Cultivator License approved by the Cannabis Control Board was March 15, 2022 – June 30, 2022.

Adult-Use Nursery



“Nursery” means a licensee that produces only clones, immature plants, seeds, and other agricultural products used specifically for the planting, propagation, and cultivation of cannabis by licensed adult use cannabis cultivators, microbusinesses, cooperatives and registered organizations.

A nursery license authorizes the production, sale and distribution of clones, immature plants, seeds, and other agricultural products used specifically for the planting, propagation, and cultivation of cannabis by licensed adult-use cultivators, cooperatives, microbusinesses, or registered organizations

****An adult-use cultivator may hold one nursery license.***



Adult-Use Processor



“Processor” means a licensee that extracts concentrated cannabis and/or compounds, blends, extracts, infuses, or otherwise manufactures concentrated cannabis or cannabis products.

A processor’s license authorizes the acquisition, possession, processing, and sale of cannabis from the licensed premises of adult-use cultivators to licensed distributors.

****No person may own more than one processor license. A processor may also obtain a distributor license, solely for the distribution of their own products. Processors may not own or have any interest in a licensee in the cannabis retail tier.***





Adult-Use Distributor



“Distributor” means any person who sells at wholesale any cannabis product for which a license is required.

A distributor’s license authorizes the acquisition, possession, distribution and sale of cannabis from the licensed premises of a licensed adult-use processor, adult-use cooperative, microbusiness, or registered organization authorized to sell adult use cannabis, to duly licensed retail dispensaries, on-site consumption sites and adult-use delivery licensees.

****No person may own more than one distributor license. Distributors may not own or have any interest in a licensee in the cannabis retail tier.***

Adult-Use Cooperative



A cooperative license authorizes the acquisition, possession, cultivation, processing and sale from the licensed premises of the adult-use cooperative by such licensee to duly licensed distributors, on-site consumption sites, registered organization and/or retail dispensaries, but not directly to cannabis consumers.

A cooperative license must be organized under cooperative principles, including but not limited to being democratically controlled by the members themselves, on the basis of one vote per member.

****No person may own more than one cooperative license. Cooperatives may not own or have any interest in a licensee in the cannabis retail tier. A cooperative can be an LLC, LLP, or any other appropriate business structure allowed by the board.***

Adult-Use Microbusiness



“Microbusiness” means a licensee that may act as a cannabis producer for the cultivation of cannabis, a cannabis processor, a cannabis distributor, and a cannabis retailer.

A microbusiness license authorizes the limited cultivation, processing, distribution, delivery, and sale of their own adult-use cannabis and cannabis products.

****No person may own more than one microbusiness license. No microbusiness can have an interest in or own any other adult-use license type.***

Adult-Use Retail Dispensary

“Retailer” means any person who sells at retail any cannabis product, to cannabis consumers.

A retail dispensary license authorizes the acquisition, possession, sale and delivery of cannabis from the licensed premises of the retail dispensary by such licensee to cannabis consumers.

****No person may own more than three retail dispensary licenses. Retail licensees may not own or have any interest in a licensee in the cultivation, processing or distribution tier.***



Conditional Retail Dispensary (CAURD)

CAURD licensees are the first retail dispensaries to open for legal adult-use cannabis sales in New York State, establishing businesses owned by justice-involved individuals at the bedrock of New York’s adult-use cannabis market. CAURD licensees are positioned to make New York’s first legal cannabis sales before the end of 2022, speeding the delivery of investments into communities across New York State that were impacted by the disproportionate enforcement of cannabis prohibition.



Adult-Use On-Site Consumption



“On-site consumption” means the consumption of cannabis in an area licensed by the Cannabis Control Board.

An on-site consumption license authorizes the acquisition, possession, and sale of cannabis from the licensed premises of the on-site consumption licensee to cannabis consumers for use at the on-site consumption location.



****No person may own more than three on-site consumption licenses. On-site consumption licensees may not own or have any interest in a licensee in the cultivation, processing or distribution tier.***

Adult-Use Delivery



A delivery license authorizes the delivery of cannabis and cannabis products by licensees, independent of another adult-use cannabis license, to cannabis consumers.

Delivery licenses may not have a total of more than twenty-five individuals, or the equivalent thereof, providing full time paid delivery services to cannabis consumers per week under one license.

****No person may own more than one delivery license. No delivery licensee can have an interest in or own another adult-use license type.***



Registered Organization Adult-Use Cultivator Processor Distributor Retail Dispensary

A registered organization cultivator processor distributor retail dispensary license authorizes a registered organization to have the same privileges and conditions as adult-use cultivator, processor, distributor, and retail dispensary licensees.

The location of registered organization adult-use retail dispensaries will be limited to three of the organization's medical dispensaries' and only authorizes the distribution of the registered organization's own products. The timing and manner of a registered organization's participation in the adult-use market will be determined by the Cannabis Control Board.



****No registered organization can have an interest in or own any other adult-use license type.***

Registered Organization Adult-Use Cultivator Processor Distributor



A registered organization cultivator processor distributor license authorizes a registered organization to have the same privileges of adult-use cultivator, processor, and distributor licensees.

The timing and manner of a registered organization's participation in the adult-use market will be determined by the Cannabis Control Board.



****No registered organization can have an interest in or own any other adult-use license type.***



RESOURCES

Next Steps | How To Get Involved



- SIGN UP FOR OUR NEWSLETTER
- FOLLOW US ON SOCIAL MEDIA
- CONTACT US WITH ANY QUESTIONS
- VISIT OCM WEBSITE FOR UPDATES
- PROVIDE FEEDBACK DURING COMMENT PERIOD ON REGULATIONS
- GET INVOLVED AND STAY ENGAGED!

SAVE THE DATE

The New Grow Center | Next Events & Workshops



October 30th, 2022

**2022 NYS Cannabis Expo, Conference & Career Fair
"SOS: Safe, Organic, and Sustainable Cultivation"**

November 19th, 2022

**2022 Men's Conference | Special Workshop
"Growth & Cannabis"**



THANK YOU

Contact Us:

Email: info@thenewgrowcenter.com

Phone: (914) 344-6101

 **@thenewgrowcenter**

 **the-new-grow-center**

 **thenewgrowcenter**




**The
New
Grow
Center**